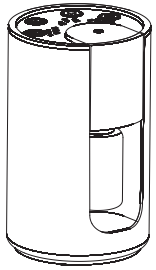


Novolia



NOMADIC ESSENTIAL
OILS DIFFUSER
BY
NEBULISATION

English



INSTRUCTIONS FOR SAFE USE EN

-Before you use the devices, read carefully and keep the operating instructions described below. Always make sure that you properly handle the devices. Throughout this instruction manual, the term «device» refers to the diffuser and its accessories.

-If you notice a burning smell or the product shows other signs of significant malfunction, immediately disconnect the power cord from the electrical outlet. Wait until the burning smell dissipates, then contact your retailer.

-If the device falls, disconnect the power cord from the electrical outlet.

-Maintain the essential oil diffuser with an appropriate cleaner available at your retailer.

-Do not try to disassemble or modify the devices. You will be exposed to hazards and your parts and labour warranty would become invalid.

-Do not bend, twist or pull the power cord, this may damage it and cause a fire or electrical shock hazard.

-Do not place heavy objects on the devices.

-Do not obstruct the diffuser output of your

device.

-Do not use the devices in areas that are smoky, humid, dusty, or subject to strong vibrations.

-Do not expose the devices to high temperatures.

-Keep the devices out of the reach of children.

-Do not use the devices near an open flame.

-Do not use the devices in a humid atmosphere.

-Do not immerse the devices in water.

-Carefully observe the precautions for use provided with the bottles of essential oils.

-Do not overfill the essential oil diffuser. They could stain the furniture on which they are placed.

-Do not place the diffuser on an inclined or unstable piece of furniture. It could fall, break and cause injury.

-This device can be used by children 8 years of age and older and by persons with limited physical, sensory or mental abilities or without experience or knowledge of the device, if they are properly supervised or if the instructions relating to the safe use of the device were given to them and the associated risks were understood.

-Children must not play with this device.

-Cleaning and maintenance must not be performed by unsupervised children.

-Only use substances recommended for diffusion in the device. Using other substances may cause a toxic hazard or risk of fire.

-Warning: Refer to the **"Installation"** section for all recharging operations.

-Warning: To recharge the battery, use only the power supplied with the device.

-Unplug the device before handling or maintenance. Make sure that it has been emptied of any liquid or substance for diffusion.

-This device contains batteries that cannot be replaced.

-The battery must be removed from the device before it is disposed of. The unit must be disconnected from the power supply when removing the battery.

-The battery should be removed safely using the following instructions:

1.-Remove the pad from the base.

2.-Unscrew the four screws of the bottom cover.

3.-Cut the battery wires.

4.-Remove the battery.

-Do not try to touch the ultrasonic membrane which is highly sensitive, with the fingers, or scrap it with metal tools, otherwise it will reduce mist output.

-The device must only be powered using very low voltage for safety reasons, which corresponds to the device marking.

-If the power cable is damaged, it must be replaced with a cable or special kit available from the manufacturer or after-sales support.

-If the pins of the plug part are damaged, the plug in the power supply unit must be discarded.

-This instruction manual and spare parts are available on **www.innobiz-pro.com**

-General precautions for essential oils :

-Only use substances recommended for diffusion in the device.

-Using other substances may cause a toxic hazard or risk of fire.

-Essential oils are active ingredients which must be used in moderation and in accordance with recommended amounts and diffusion times.

-Always follow the detailed precautions for

the use of essential oils. Ask your aromatherapy vendor for advice.

-Carefully read the hazard and precautionary statements related to the pictograms.

-Wash your hands immediately after using essential oils.

-Avoid direct contact with eyes, ears and mucous membranes.

-In case of allergies, and in particular respiratory allergies, exercise extreme caution in the use of essential oils. The advice of a specialist is recommended. When seeking the advice of a physician, have the essential oil's container and label available.

-Keep essential oils away from air and light, as well as any source of heat or flame.



Read operator's manual.



The crossed-out wheeled bin symbol affixed to the product or its accessories indicates that they are classified as electrical and electronic equipment.

As such, the European regulations require it is collected separately from other waste:

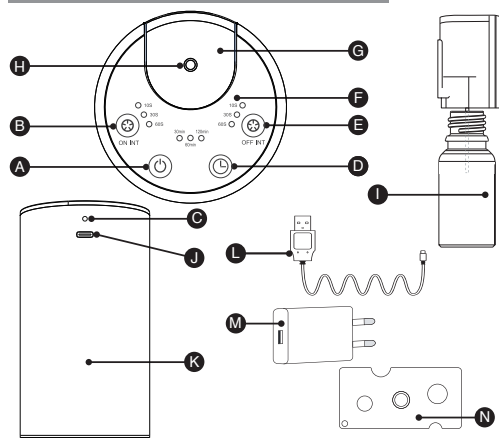
- by distributors, if an equivalent product is purchased,
- using the locally-available collection facilities (waste reception centre, separate collection, etc.).

In this way, you will be helping to reuse and recycle Waste Electrical and Electronic Equipment that could have potentially harmful effects on the environment and on human health.



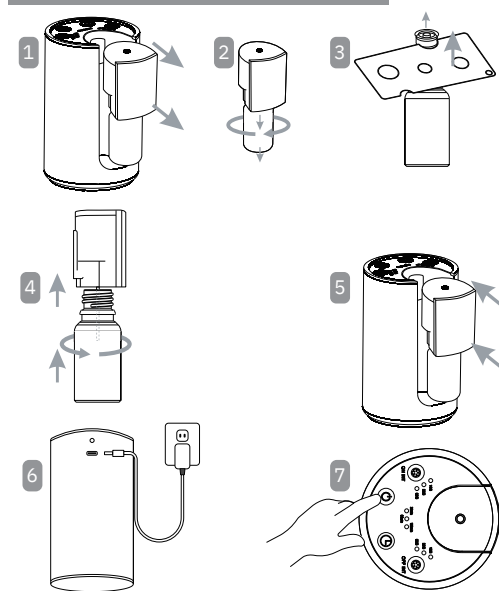
This appliance satisfies the European Community requirements concerning safety, hygiene, the environment and consumer protection.

Description of parts



- A.- On/off button and intensity control.
- B.- Diffusion time adjustment button [ON].
- C.- Charge indicator.
- D.- Timer.
- E.- Stop time adjustment button [OFF].
- F.- Settings.
- G.- Removable nozzle.
- H.- Diffusion outlet.
- I.- Empty bottle.
- J.- USB C-type socket.
- K.- Diffuser body.
- L.- USB / USB-C cable.
- M.- AC adapter.
- N.- "Dropper remover" accessory.

Installation



- 1) Grab the diffuser and remove the removable nozzle (G) out of the diffuser body (K).
- 2) Unscrew the empty bottle (I) from the nozzle (G).
- 3) Take your bottle of essential oil and remove the dropper using the "dropper remover" (N).
- 4) Screw your bottle of essential oils to the nozzle.
- 5) Insert the "nozzle + bottle of essential oils" assembly into the body of the diffuser.
- 6) Connect the diffuser via the USB/USB-C cable (L) and power adapter (M).
- 7) Start the diffuser by pressing the on/off button (A).

On/off button (A):

Hold down for 3 seconds to start the diffuser. Successively press the button to change the intensity of the mist: L (fine mist) or H (dense mist).

Diffusion time adjustment button [ON] (B):

Successively press the button to select the diffusion time: 10 seconds, 30 seconds or 60 seconds.

Stop time adjustment button [Off] (E):

Successively press the button to select the stopping time between two diffusion: 10 seconds, 60 seconds or 120 seconds.

Timer (D):

Successively press the button to set the timer: ON (diffusion without stopping), 1hr (diffusion for 1 hour, automatic shutdown) or 2hr (diffusion for 2 hours and automatic shutdown).

For example, you can choose to diffuse for 1hr with operating cycles where the device diffuses for 30 seconds, then pauses for 10 seconds before resuming for 30 seconds, then pause again for 10 seconds, and so on, 1hr.

Charge indicator (C):

When the diffuser is charging, the indicator light is red. When the diffuser is fully charged, the indicator light turns off and the diffuser goes into "sleep mode".

When the battery level is insufficient, the indicator light flashes 5 times before the diffuser turns off.

Maintenance

Clean your diffuser once or twice a month, as well as each time you change essential oils or if the device has been inactive for a long time (more than two weeks). To do this, replace the bottle of essential oils with a bottle of diffuser cleaner (EAN: 3700471002387). Then start a diffusion cycle and let the diffuser run for 3 minutes. Repeat this operation a second time if the diffusion nozzle is clogged with residues of essential oils.

Never use water to clean the diffuser. Indeed, water does not mix with essential oils and could therefore clog the diffusion outlet nozzle.

Specifications

Model: Novolia.

Diffusion mode: Nebulisation.

Diffusion area: 50 m².

Weight: 395 g.

Power supply: AC 100 - 240V(50/60HZ) / DC 5V 1A.

Power: 5W, 5V, 1000mA.

Battery: 2400mAh.

Dimensions: Ø70x116 mm.

Accessories: Adapter, USB cable, Instruction manual and dropper remover.

Charging time: ~3 hours.

Diffuser: Ref. 3700471004893.

Troubleshooting

The device no longer diffuses:

- Check that the essential oils used are 100% pure and natural.
- Check that your device is sufficiently charged. If the diffuser does not light up, plug it into a wall socket via the power cable to recharge it.
- Check that there is enough essential oil in the bottle. If necessary, replace it with a full bottle.
- Maintain and clean your diffuser as described in the section below.
- Check that the "nozzle + essential oil bottle" assembly is correctly installed and screwed on.

The diffuser no longer recharges:

- Make sure the power supply is properly connected and the Type C plug is plugged into the diffuser. If necessary, disconnect and reconnect the assembly.

Guarantee

The Novolia diffuser is under 3 years of warranty parts and labour.

Warranty cannot cover damages caused by wrong use for or incorrect storage of the mister and its parts.

The warranty comes into force on the date of purchase. Please be sure to keep your original invoice in order to ask for any aftersales service.


innobiz
Essential oil
diffusion expert

8 rue Louis Breguet, le 610, bâtiment B-34830 Jacou - France
www.innobiz.fr